

A-2000 SERIES™ BOILERS & WATER HEATERS



Compare the Sellers A-2000 vs. the competition and see the

THE SELLERS ADVANTAGE

VS. COPPER MANIFOLD WATER HEATERS

- In poor water conditions A-2000-7400WH requires considerably less maintenance
- A-2000-7400WH has the largest diameter heat exchanger with a single continuous waterway, prevents clogs
- A-2000 provides 12 to 20 year longevity with proper maintenance

VS. ALUMINUM WATER HEATERS

- Aluminum heat exchangers are PH water temperamental
- Copper is better heat transfer agent
- Aluminum is subject to thermal cracking

VS. STEEL TUBE BOILERS

- Smaller footprint
- 10 year warranty for heat exchanger
- 5 year burner warranty on A2000 burners
- Steel is subject to "thermal cracking"

DISCOVER MORE INSIDE

A-2000 SERIES™ WATER HEATERS

ATMOSPHERIC MID EFFICIENT WATER HEATERS

The A-2000 is a mid efficient commercial water heater with a unique “hourglass shaped” copper fin tube heat exchanger. Its newly updated and improved engineered design has been reliably tested over 65 years. The A-2000 is a mid efficient energy (83%) water tube boiler or water heater depending upon application. The A-2000 has become an industry benchmark for its reliability because of its “large diameter 1.25 inch fin tube” and its “single continuous water way” not permitting clogging or water stoppage.

Other copper tube equipment brands clog within their manifold header tubes or within the small diameter .75 inch heat exchanger tubes. The A-2000 overcomes water stoppage by all water continuously moving through the same water path from top to bottom. The heat exchanger does not clog unless under extreme abnormal water or operational conditions.

PLAIN AND SIMPLE... THE A2000 IS REFERRED TO AS AN INSTANTANEOUS, MID EFFICIENCY, PLUG AND PLAY, “BULLET PROOF” HEATING PRODUCT.



A-2000 SERIES™ HIGHLIGHTS

- Atmospheric Boilers / Water Heaters
- Stainless Steel Jacket – UP TO 83% Thermal Efficiency
- Compact Design - Service Friendly – 10 year Limited Warranty
- 350,000 TO 1,400,000 BTU

TECHNOLOGIES

REQUIREMENTS

ELECTRICAL A single power connection is required with a 20 amp circuit - 120/60/1

STACK Venting Options: Vertical, Common and Sidewall (with power vent)*

AIR Follow National Fuel Gas Code Requirements ANSI Z223.1

GAS Gas pressure min. 4” w.c. to max. 14” w.c. Natural gas or Propane fuels

*Review local codes

THE SELLERS ADVANTAGE: A-2000 SERIES™

UP TO 83% THERMAL EFFICIENCY

Low operating cost and superior return on investment.

PROVEN RELIABILITY

Decades of proven design and rugged construction.

COMPACT DESIGN

Standard doorway access. Small footprint.

ATMOSPHERIC BURNER

No blower or draft inducer required. Cast iron Burners with brass orifices.

SERVICE FRIENDLY

Easy access to controls. No need to disassemble Heat exchanger in order to de-lime.

STAINLESS STEEL JACKET

Long-life polished finish.

EXCEPTIONAL WARRANTY

Lifetime thermal shock warranty. Limited 10-year warranty.

1 1/4” NON-FERROUS WATERWAY

Helically wound, gasketless, single pass, 1.” copper finned coil

THE A-2000 SERIES™ IS PERFECT FOR HOTELS, RESTAURANTS, SCHOOLS, GOVERNMENT FACILITIES, ASSISTED LIVING FACILITIES, OFFICES AND LAUNDRIES!

WATER HEATER DIMENSIONS & SPECIFICATIONS

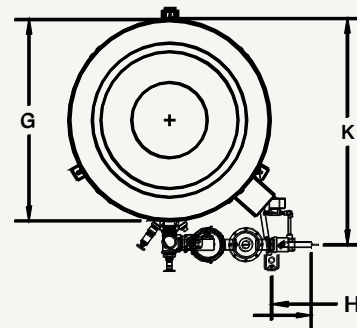
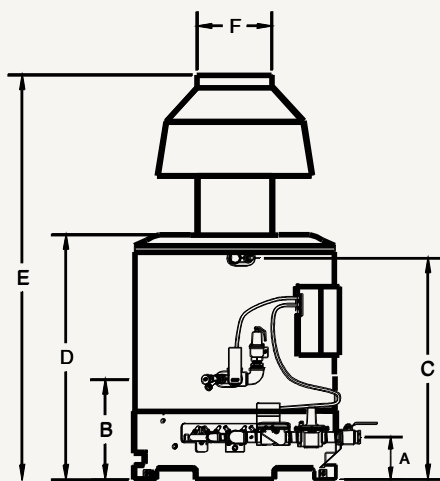
	BTU INPUT	BTU OUTPUT	GPH REC @ 100°F RISE	GAS CONN	WATER CONN	VENT	PUMP	SHIPPING WEIGHT
A2H035	350,000	280,000	336	1"	1 1/2"	9"	1/9 HP	400#
A2H050	500,000	400,000	480	1"	1 1/2"	10"	1/9 HP	450#
A2H070	700,000	560,000	672	1 1/4"	1 1/2"	12"	1/2 HP	525#
A2H097	970,000	776,000	932	1 1/4"	1 1/2"	16"	1 HP	600#
A2H120	1,200,000	960,000	1152	1 1/2"	1 1/2"	16"	1 1/2 HP	675#
A2H140	1,400,000	1,120,000	1345	1 1/2"	1 1/2"	18"	1 1/2 HP	725#

	A	B	C	D	E	F	G	H	K
A2H035	8 1/2	17 1/2	34	38	58	9	24	10	29
A2H050	8	16 1/2	33	42	69	10	28	12 1/2	33
A2H070	10 1/4	13 1/4	33	38 3/4	66	12	32	19	36 1/4
A2H097	6 3/4	14 3/4	35	39 1/2	81	16	35	20	40
A2H120	6	14 1/2	42	46	82	16	35	22	43
A2H140	5	15	41 1/2	46	98	18	35	22	43

BOILER DIMENSIONS & SPECIFICATIONS

	BTU INPUT	BTU OUTPUT	GAS CONN	WATER CONN	VENT	SHIPPING WEIGHT
A2B035	350,000	280,000	1"	1 1/2"	9"	400#
A2B050	500,000	400,000	1"	1 1/2"	10"	450#
A2B070	700,000	560,000	1 1/4"	1 1/2"	12"	525#
A2B097	970,000	776,000	1 1/4"	1 1/2"	16"	600#
A2B120	1,200,000	960,000	1 1/2"	1 1/2"	16"	675#
A2B140	1,400,000	1,120,000	1 1/2"	1 1/2"	18"	725#

MODEL	A	B	C	D	E	F	G	H	K
A2B035	8 1/2	17 1/2	34	38	58	9	24	10	29
A2B050	8	16 1/2	33	42	69	10	28	18 1/2	33
A2B070	10 1/4	13 1/4	33	38 3/4	66	12	32	25	36 1/4
A2B097	6 3/4	14 3/4	35	39 1/2	81	16	35	26	40
A2B120	6	14 1/2	42	46	82	16	35	28	43
A2B140	5	15	41 1/2	46	98	18	35	28	43



PACKAGED SYSTEMS

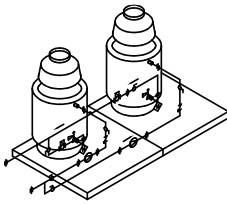
Easy to install with quick hook up to services

- Completely fabricated at factory
- Requires only, electric, gas & vent connections in the field
- Modular design allows multiple units to be installed with one storage tank increasing capacity delivery through cascading unit capability

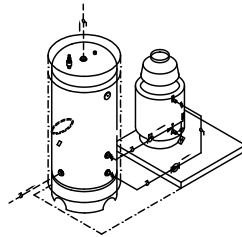
Skid mounted, pre-plumbed and pre-wired, pumps, aqua stats, flow switches, valves, T & P, thermometers included

ANY SIZE WATER HEATER OR BOILER CAN BE MATCHED TO ANY SIZE ASME STORAGE TANK

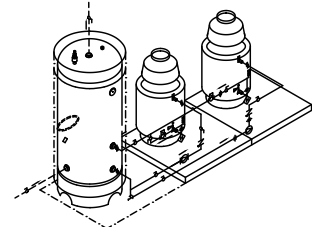
Sellers Manufacturing systems are manufactured a natural gas or propane fired packaged systems are manufactured and completely plumbed, wired and skid mounted by skilled craftsmen to ensure installation ease and optimum performance. By matching ANY water heater or boiler input with ANY capacity storage tank, packaged systems can be designed to meet any application.



A2000 Multiple Unit Packaged Boiler System



A2000 Unit with Tank Packaged Water Heater System



A2000-Multiple Unit with Tank Packaged Water Heater System

10 YEAR LIMITED WARRANTY

- Single Source Burner - WH Package
- Lower Maintenance Costs - Absolutely No Refractory
- Lower Emissions
- ETL Labeled Packaged WH

STANDARD EQUIPMENT

Hourglass copper fin tube heat exchanger	Manually operated gas cock	Drain cock
Electronic spark ignition	Manual reset high limit control	Gas pressure regulator
24-volt control system	Enclosed control panel	Bronze inlet & outlet manifold
Cast iron burner with brass orifice jets	24-volt main gas valve	ASME 160# PSI WP
ASME pressure relief valve	Draft hood	Stainless steel exterior jacket

OPTIONAL EQUIPMENT

Non-ferrous circulator
CSD-1 gas train
Thermometer
Flow switch
Pump delay
Low water cut-off
2-Stage gas train

SAMPLE INSTALLATIONS

Arizona Biltmore	St. Bernard School	Marriot Hotel
Vetter Health Services	Delta Sonic Car Wash	Auburn Correctional
Glen Residential Living	Steiner Atlantic Equipment	Southeastern Provision Company
Crowne Plaza – Trinidad	Commercial Laundry Equipment	River House Apartments
Lawton Public Schools	University Towers	