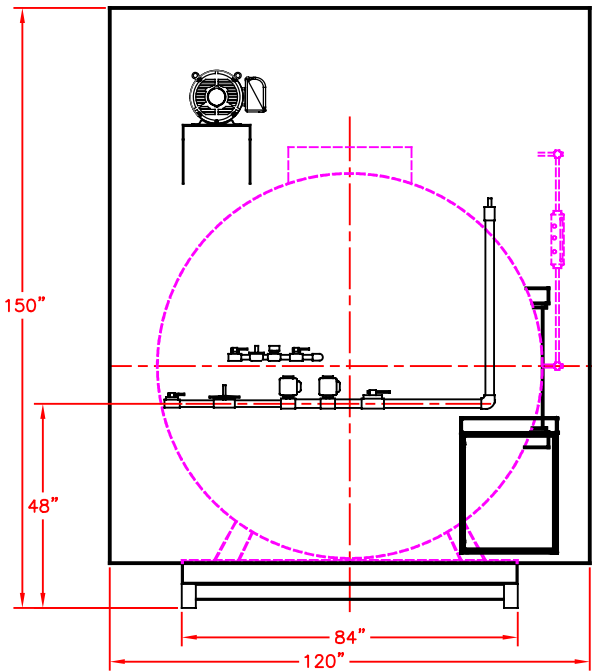
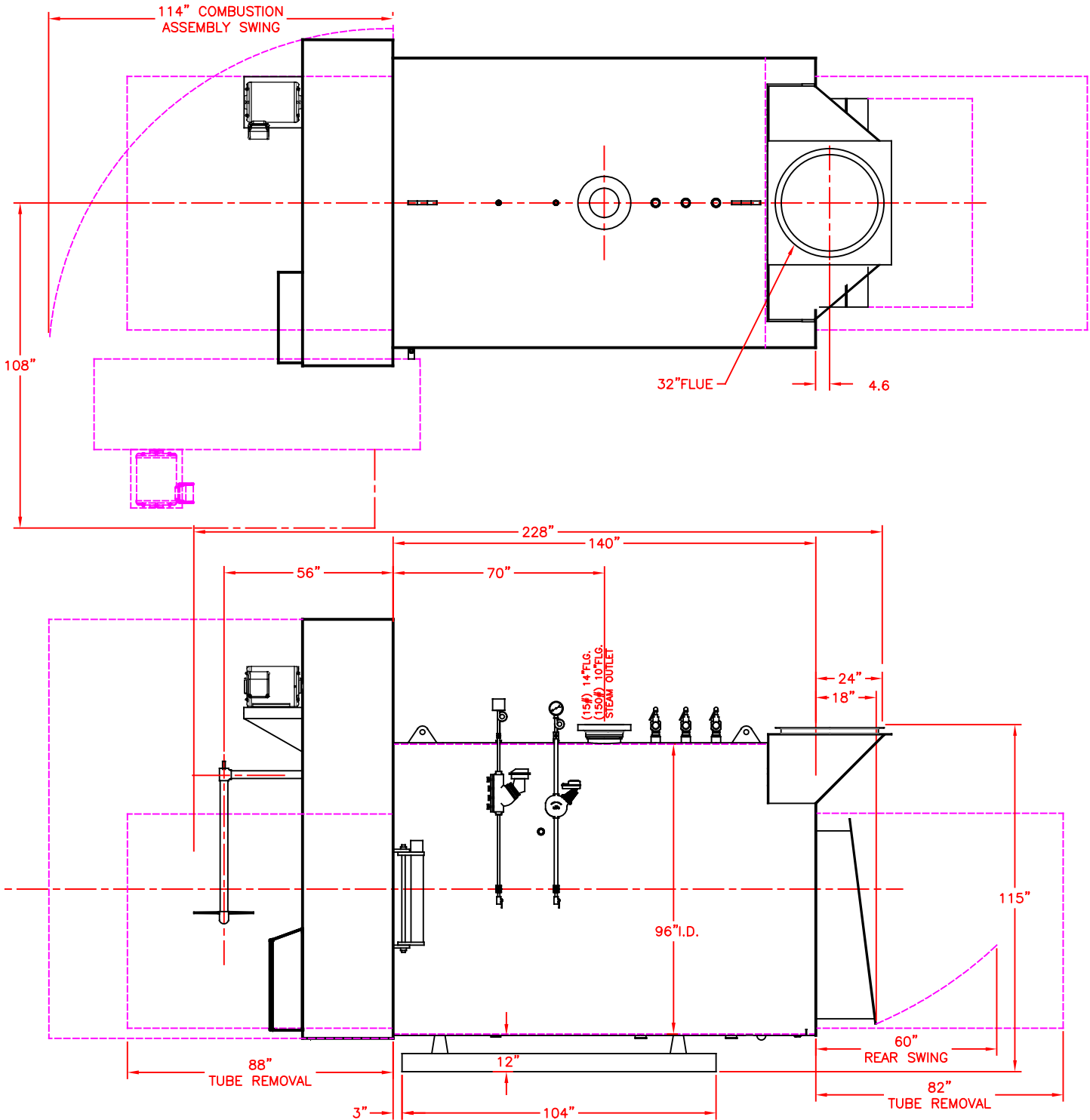


NOTES:

- Boiler template is for S, X, & H Series Boilers
- Boiler shown is standard built boiler. Modifications are available upon request.
- Overall length of boiler may vary based on gas train sizing.
- Number, size, and location of safety relief valves and openings may change based on design pressure of boiler.
- Some accessories may or may not be shown.



FRONT VIEW



Sellers
MANUFACTURING CO.

918 West Walnut Street
Danville, KY 40422
Phone: (859) 236-3181
Fax: (859) 236-3184

Proprietary Information

These drawings and/or specifications are the property of Sellers Mfg Co. They are issued in strict confidence and shall not be reproduced, copied, or used as the basis for manufacture or sale without permission of the owner.

3					
2					
1					
REV.	DATE	DESCRIPTION OF CHANGE	DRAWN	APPROVED	
WEIGHT	lbs				
MATERIAL					
FINISH					

UNLESS OTHERWISE SPECIFIED:
DIMENSIONS ARE IN INCHES
TOLERANCES:
FRACTIONAL ± 1/32
XXX ± .015
XXXX ± .005
ANGLES ± 1 DEG
DO NOT SCALE DRAWING

TEMPLATE LAYOUT 900HP
STEAM BOILER

SCALE: 1:48	DRAWN BY: MMY	DATE: 04/15/21
DWG. SIZE: B	APPR. BY:	DATE:
SHEET: 1 OF 1	DRAWING NUMBER:	REV: 0