



SM-4100 SERIES SM-4300 SERIES

Technical Specifications

Sellers SM-4100 Series Boiler Feed Units set new standards of performance. Reliable and efficient, each unit features heavy gauge, 3/16" steel receivers for long operating life.

In addition, 3450 RPM motors assure maximum efficiency while maintaining minimum motor horsepower. Available in a wide range of sizes, these U.S. made units have just the right accessories and options to meet your unique needs.



Simplex Unit
Shown with Optional
Solenoid Operated Make-Up Water Valve
with Reverse Acting Float Switch

Features

Standard Features

- Heavy gauge steel or optional stainless steel receivers
- Duplex construction with isolation valves
- Solenoid make-up water valve with bypass
- Gauge glass
- Temperature Gauge
- Low Water Cut Off
- NEMA 12 Control Panel
- Bronze fitted centrifugal pumps
- Energy efficient 3450 RPM motors
- Automatic venting
- Ceramic pump seal (250°F)

Optional Features

- 165 PSI discharge pressure
- Triplex pumps
- Heating sparge tube with control valve
- Special motor construction, such as totally enclosed, washdown duty and explosion-proof is available
- Elevated tanks are available
- Complete NEMA 4 and 4X control panels
- Insulation and Jacket
- Discharge Piping
- Loading Valves

Product Features

SM-4100 SERIES SM-4300 SERIES



Unit:

Completely factory assembled and tested. Duplex units have 2 vertical pumps. All units are supplied with a gauge glass and thermometer on the side of the receiver.

Motors:

Heavy-duty, ball bearing, close-coupled pump motors with stainless steel shaft. 3450 RPM for greater efficiency and more economical operation.

Make-up Water Valve:

Mechanical, plug mounted valve with stainless steel float. Rated up to 45 psi inlet water pressure. A pressure reducing valve is required upon installation.

Receiver:

Heavy gauge steel construction. All receivers are supplied in duplex design, with triplex design optional.

Operation:

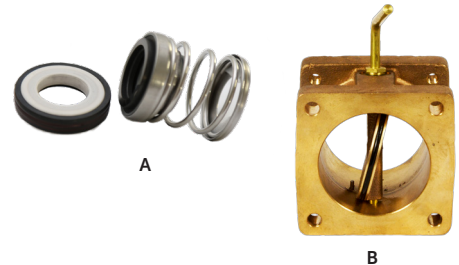
Boiler feed pump are controlled by a water level controller mounted on the boiler. If condensate is lost or delayed in the system, it is automatically replaced in the receiver through the solenoid make-up water valve.

Pump Seal (A):

Features the ultimate in ceramic technology for exceptionally long life. Because the seal runs on the bronze impeller hub, the motor shaft is literally outside the pump. Consequently, the shaft is not exposed to corrosion by condensate. Rated for temperatures up to 250°F.

Isolation Valve (B):

Standard on SM-4100 and SM-4300 series. Allows removal of pump without draining the tank.



Control Panel



Inside view of control panel

Complete NEMA 12 Control Panel

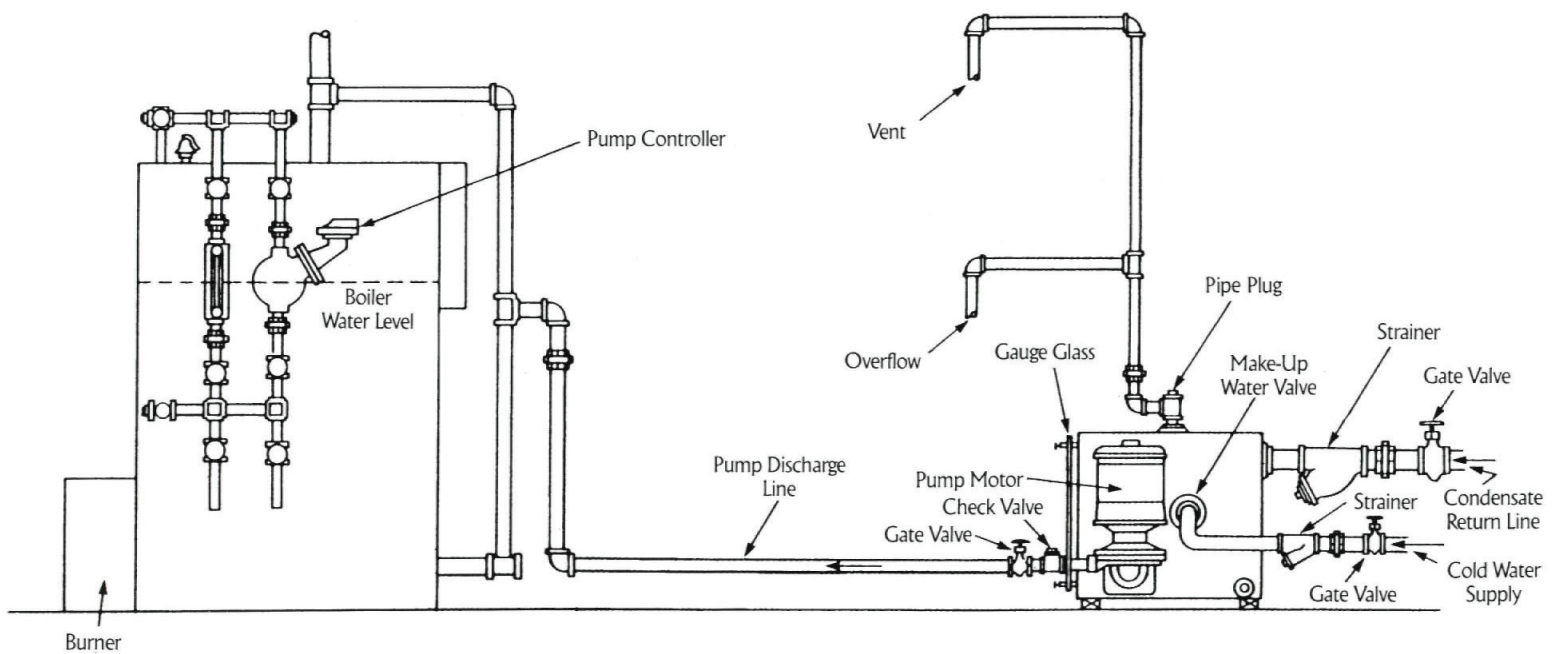
- Motor Circuit Protector
- HOA Selector Switch
- External Reset
- Control Circuit Transformer
- Pilot Light (pump running)
- Removable Mounting Plate and Terminal Strip in a Single NEMA 12 Enclosure
- Mounted and Wired with Single Point Power Connection.

Specifications

SM-4100 SERIES SM-4300 SERIES

4100 Series Engineering and Capacity Data

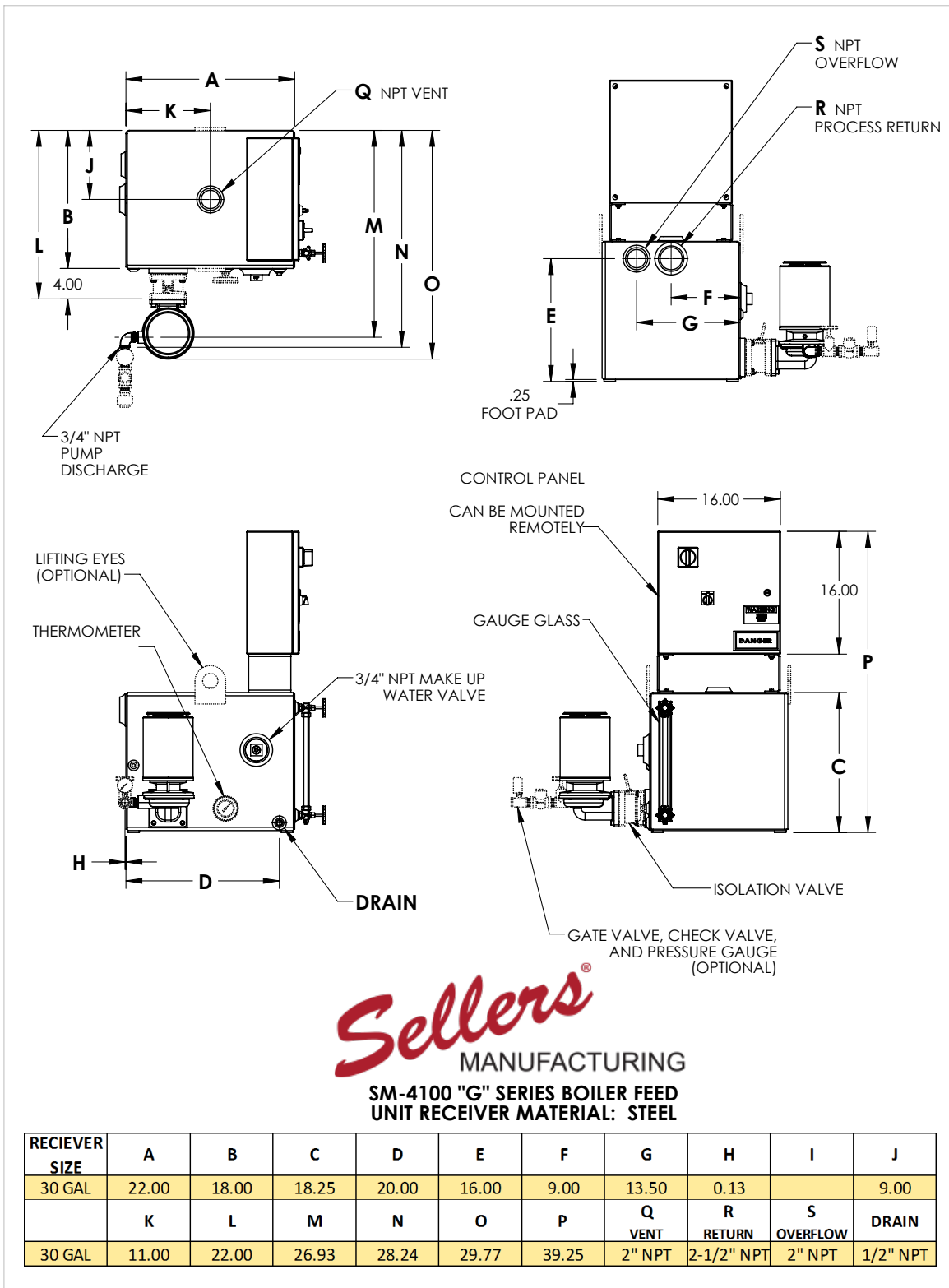
Boiler HP	Discharge Pressure PSI	Pump Capacity, GPM	Motor HP	Rec. Capacity, Gallons	Steel Unit Model Number		Stainless Steel Unit Model Number		Shipping Weight, lbs.	
					Duplex	Triplex	Duplex	Triplex	Duplex	Triplex
15	40	3	1	15	SM-4142-JDF	N/A	SM-4342-JDF	N/A	310	N/A
30	40	6	1	30	SM-4144-JDF	SM-4144-JTF	SM-4344-JDF	SM-4344-JTF	310	355
45	40	9	1	45	SM-4146-JDF	SM-4146-JTF	SM-4346-JDF	SM-4346-JTF	350	395
60	40	12	1	60	SM-4148-JDF	SM-4148-JTF	SM-4348-JDF	SM-4348-JTF	405	450
75	40	15	1	95	SM-41410-JDF	SM-41410-JTF	SM-43410-JDF	SM-43410-JTF	490	535
100	40	20	1-1/2	95	SM-41415-JDF	SM-41415-JTF	SM-43415-JDF	SM-43415-JTF	490	535
150	40	30	1-1/2	120	SM-41420-JDF	SM-41420-JTF	SM-43420-JDF	SM-43420-JTF	545	590



Product Diagrams

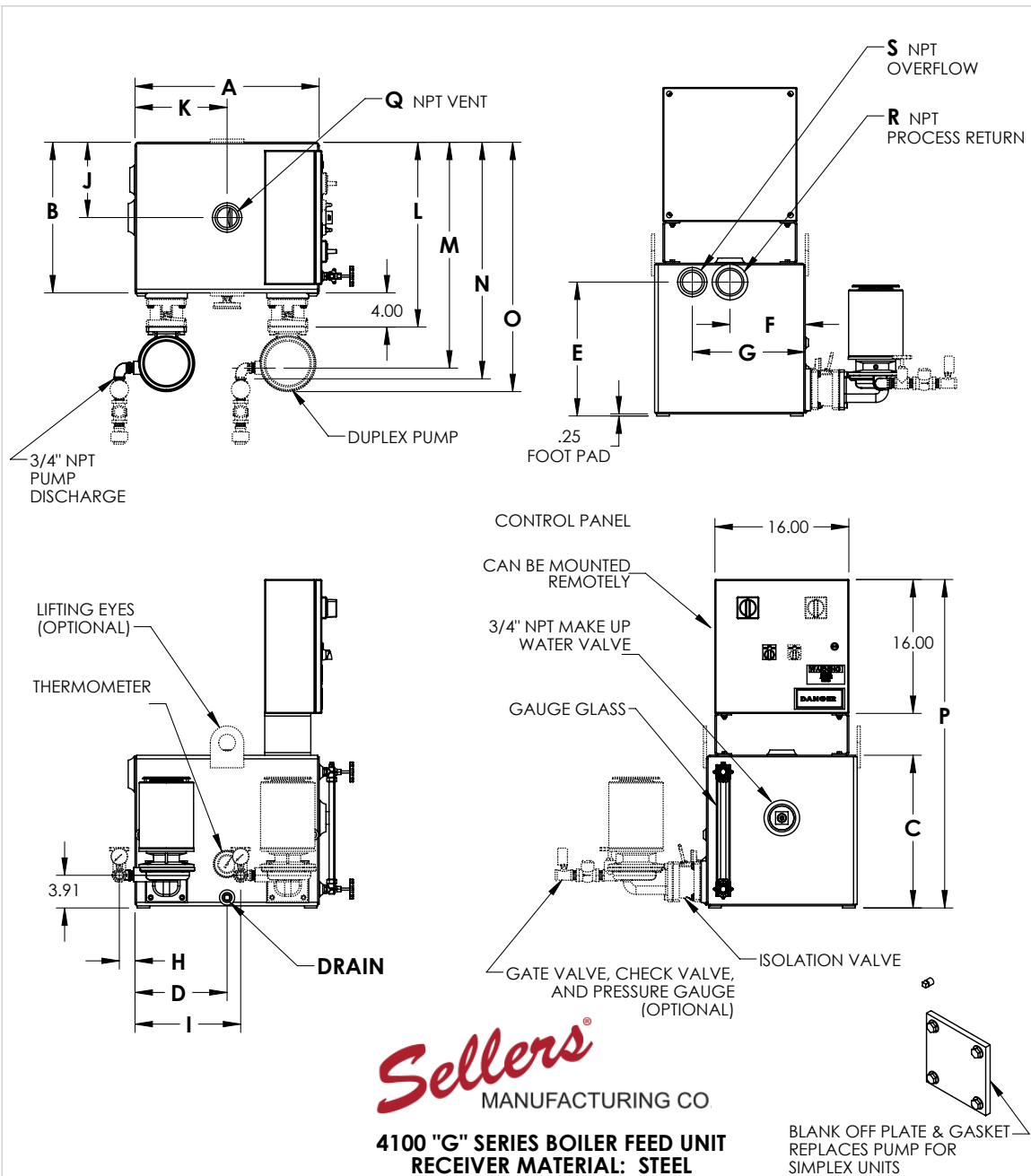
SM-4100 SERIES SM-4300 SERIES

SM-4100-GF Series



4100SER.G.BF.30SIMP

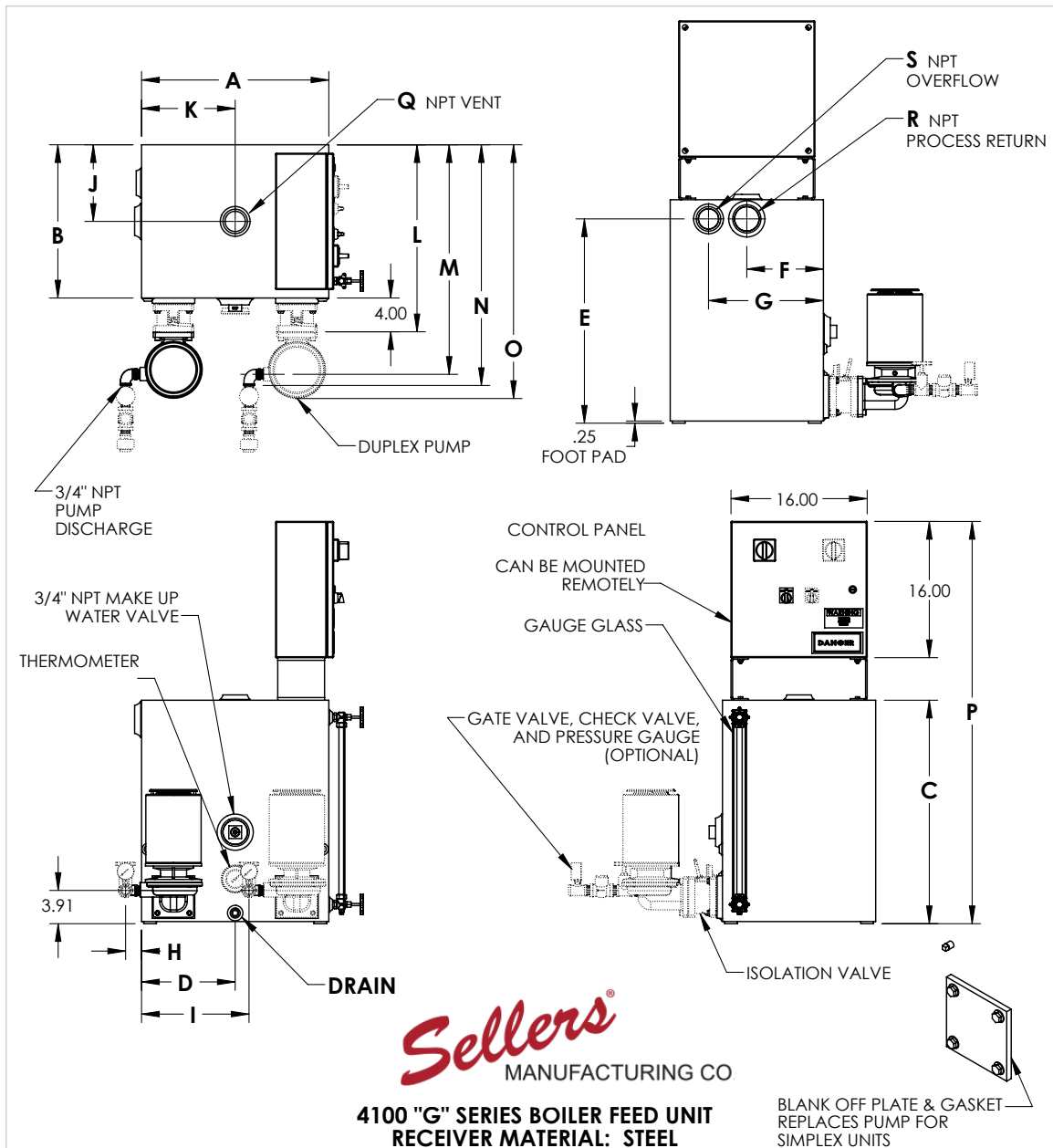
SM-4100 SERIES SM-4300 SERIES



RECEIVER SIZE	A	B	C	D	E	F	G	H	I	J
30 GAL	22.00	18.00	18.25	11.00	16.00	9.00	13.50	1.88	12.63	9.00
45 GAL	22.00	18.00	26.25	11.00	24.00	9.00	13.50	1.88	12.63	9.00
	K	L	M	N	O	P	Q VENT	R RETURN	S OVERFLOW	DRAIN
30 GAL	11.00	22.00	26.96	28.27	29.80	39.25	2" NPT	2-1/2" NPT	2" NPT	1/2" NPT
45 GAL	11.00	22.00	26.96	28.27	29.80	47.25	2" NPT	2-1/2" NPT	2" NPT	1/2" NPT

4100SER.G.BF.30-45

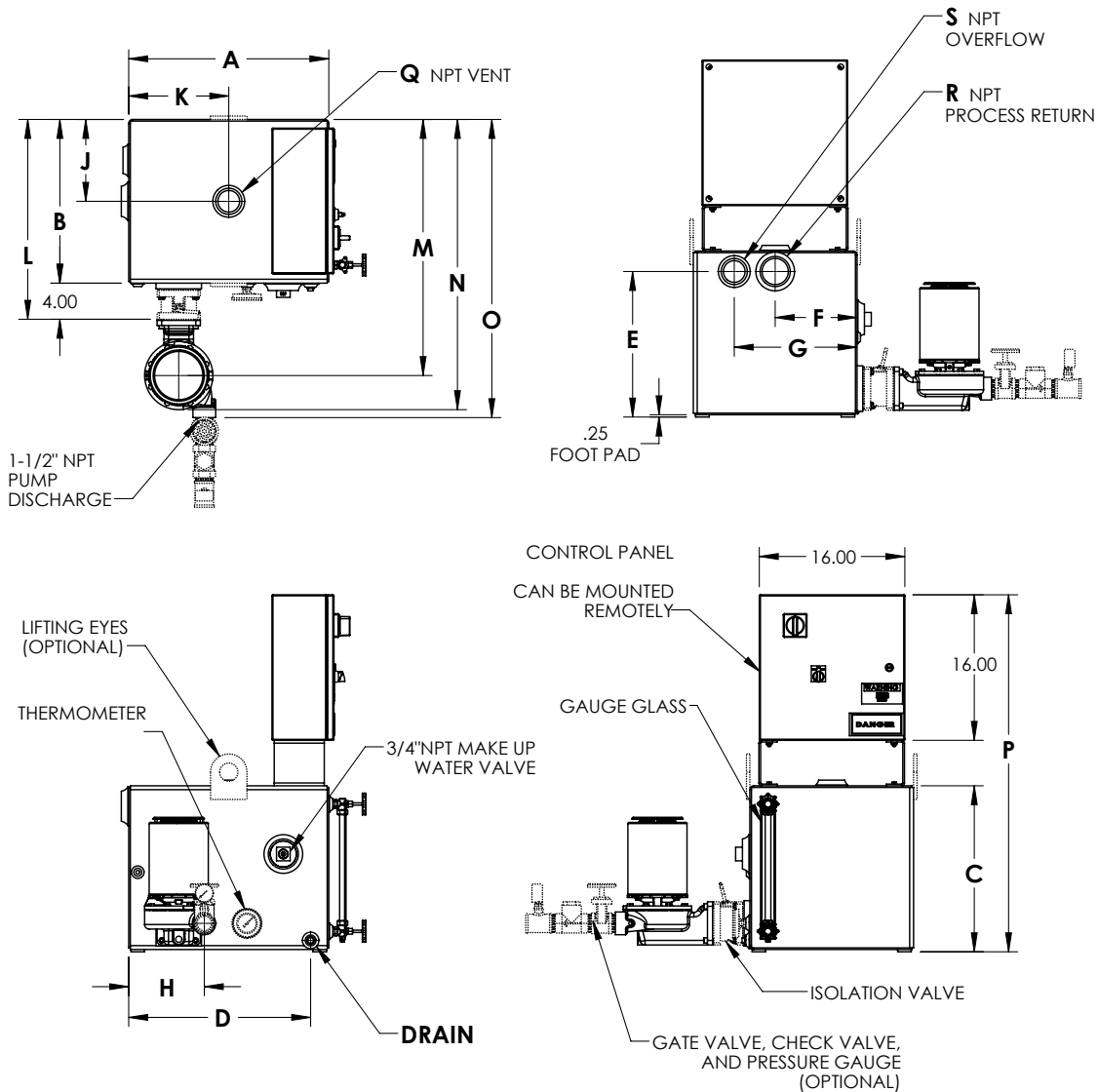
SM-4100 SERIES SM-4300 SERIES



RECEIVER SIZE	A	B	C	D	E	F	G	H	I	J
60 GAL	28.00	18.00	28.25	14.00	26.00	9.00	13.50	1.88	18.63	9.00
95 GAL	28.00	28.00	28.25	14.00	26.00	14.00	23.50	1.88	18.63	14.00
120 GAL	28.00	28.00	36.25	14.00	34.00	14.00	23.50	1.88	18.63	14.00
	K	L	M	N	O	P	Q VENT	R RETURN	S OVERFLOW	DRAIN
60 GAL	14.00	22.00	26.96	28.27	29.80	49.25	2" NPT	2-1/2" NPT	2" NPT	1/2" NPT
95 GAL	14.00	32.00	36.96	38.27	39.80	49.25	2" NPT	2-1/2" NPT	2" NPT	1/2" NPT
120 GAL	14.00	32.00	36.96	38.27	39.80	57.25	2" NPT	2-1/2" NPT	2" NPT	1/2" NPT

4100SER.G.BF.60-120

SM-4100 SERIES SM-4300 SERIES

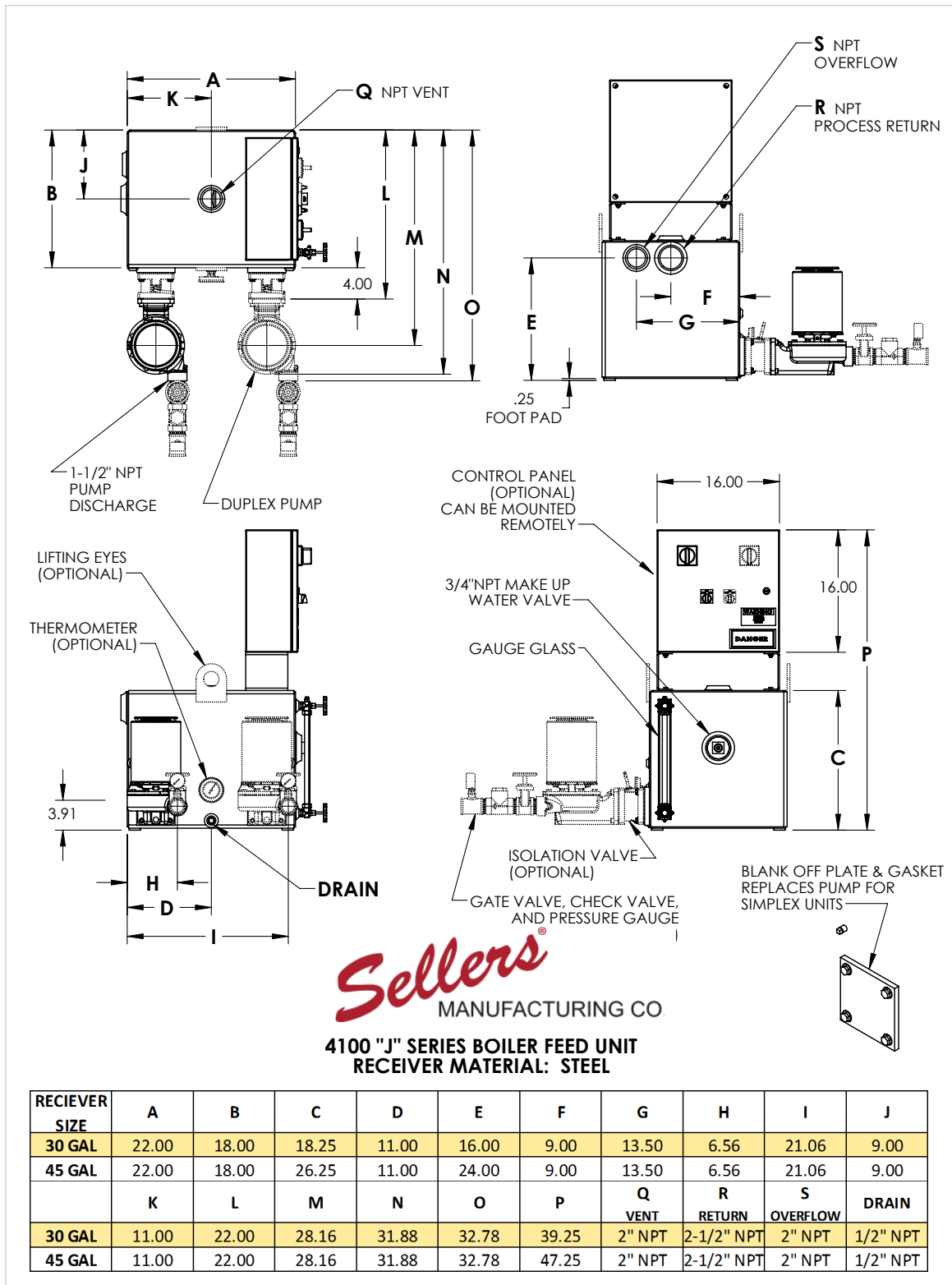


Sellers[®]
MANUFACTURING
4100 "J" SERIES BOILER FEED UNIT
RECEIVER MATERIAL: STEEL

RECEIVER SIZE	A	B	C	D	E	F	G	H	I	J
30 GAL	22.00	18.00	18.25	20.00	16.00	9.00	13.50	8.31		9.00
	K	L	M	N	O	P	Q VENT	R RETURN	S OVERFLOW	DRAIN
30 GAL	11.00	22.00	28.16	31.88	32.78	39.25	2" NPT	2-1/2" NPT	2" NPT	1/2" NPT

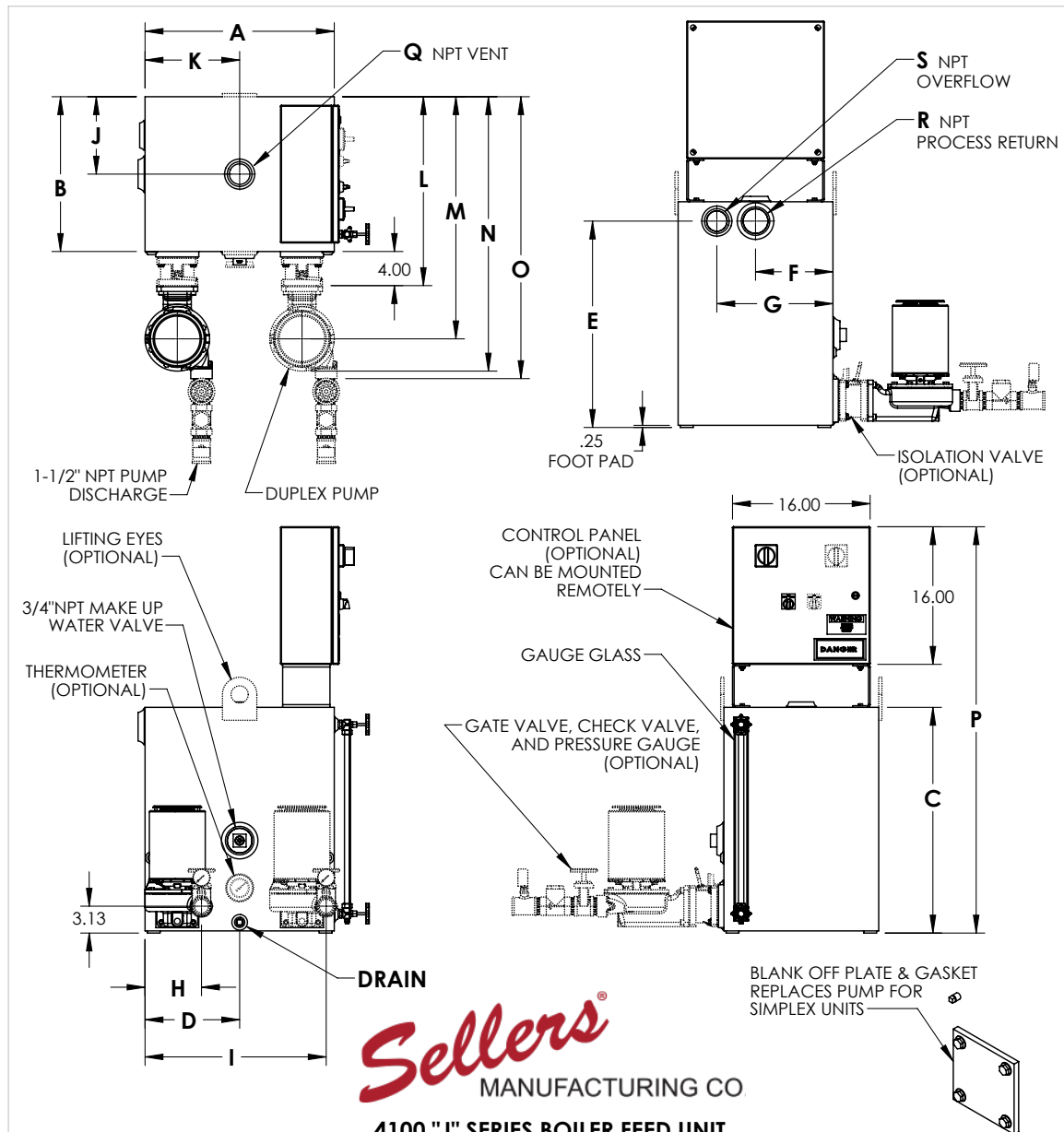
4100SER.J.BF.30SIMP

SM-4100 SERIES SM-4300 SERIES



4100SER.J.BF.30-45

SM-4100 SERIES SM-4300 SERIES



Sellers
MANUFACTURING CO

**4100 "J" SERIES BOILER FEED UNIT
RECEIVER MATERIAL: STEEL**

RECEIVER SIZE	A	B	C	D	E	F	G	H	I	J
60 GAL	28.00	18.00	28.25	14.00	26.00	9.00	13.50	6.56	27.06	9.00
95 GAL	28.00	28.00	28.25	14.00	26.00	14.00	23.50	6.56	27.06	14.00
120 GAL	28.00	28.00	36.25	14.00	34.00	14.00	23.50	6.56	27.06	14.00
	K	L	M	N	O	P	Q VENT	R RETURN	S OVERFLOW	DRAIN
60 GAL	14.00	22.00	28.16	31.88	32.78	49.25	2" NPT	2-1/2" NPT	2" NPT	1/2" NPT
95 GAL	14.00	32.00	38.16	41.88	42.78	49.25	2" NPT	2-1/2" NPT	2" NPT	1/2" NPT
120 GAL	14.00	32.00	38.16	41.88	42.78	57.25	2" NPT	2-1/2" NPT	2" NPT	1/2" NPT

4100SER.J.BF.60-120